

PART OF THE NW.1/4, OF SECTION 26, T.5N., R.1W., S.L.B. & M.

SAWYER PLACE SUBDIVISION

IN UTAH CITY

SCALE 1" = 50'

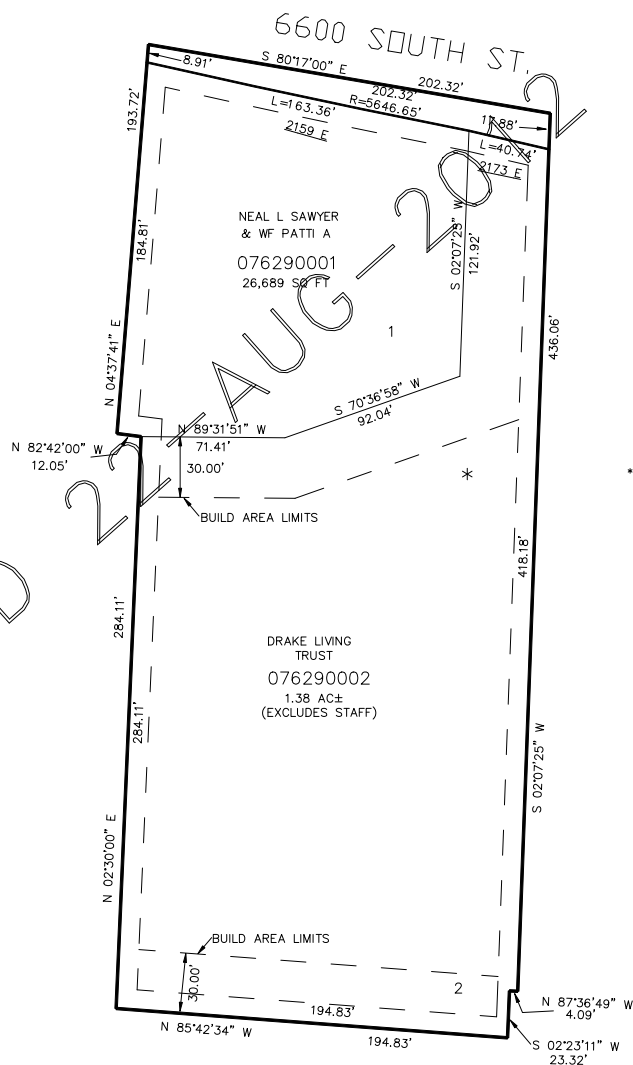
TAXING UNIT: 55

SEE PAGE 102-1

SEE PAGE 539

* FOR FIRE DEPT. ACCESS AND TURNAROUND SEE DED. PLAT

SEE PAGE 307



SEE PAGE 102-2